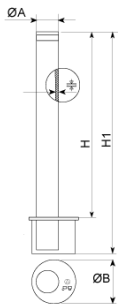
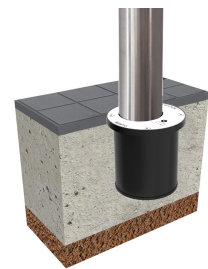


Bollard made with Ø114mm AISI 304 satin stainless steel piston.  
Recommended anchoring: embedded base and threaded rods with concrete.



Ref.	ØA	H	H1	ØB	
HEXT	Ø114	800	1000	Ø168	4



[Project sheet](#) | [CAD](#) | [Catalogue](#) | [Mounting instructions](#) | [BIM](#) | [HD image](#)