



Dambis

EDGE

Paigaldusjuhend



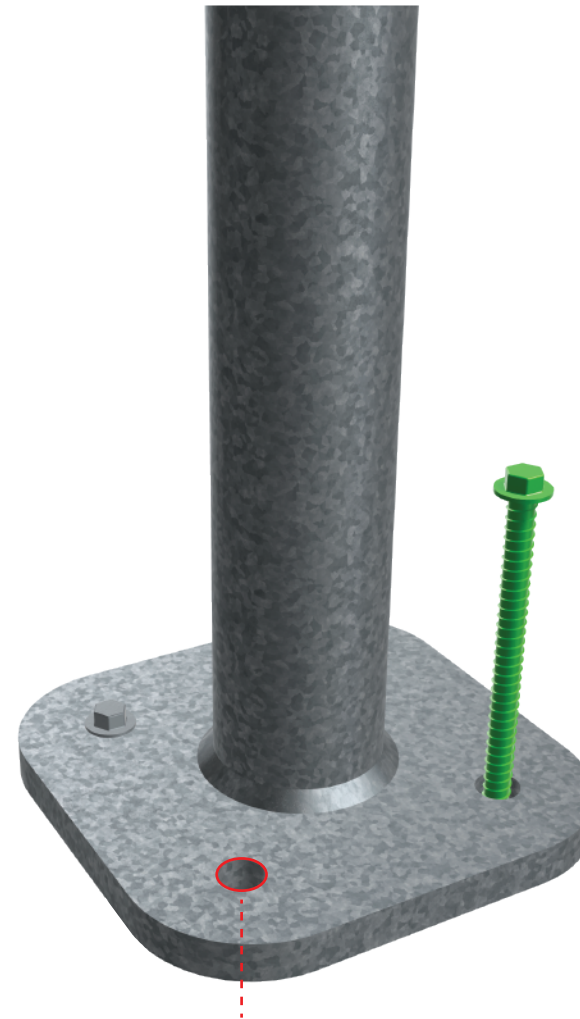


EDGE

Paigalduspind - Kõva ja sile pinnas (betoon, kivi, asfalt jne)

Paigaldusvahend - M10 ankurpolt või betoonikruvi

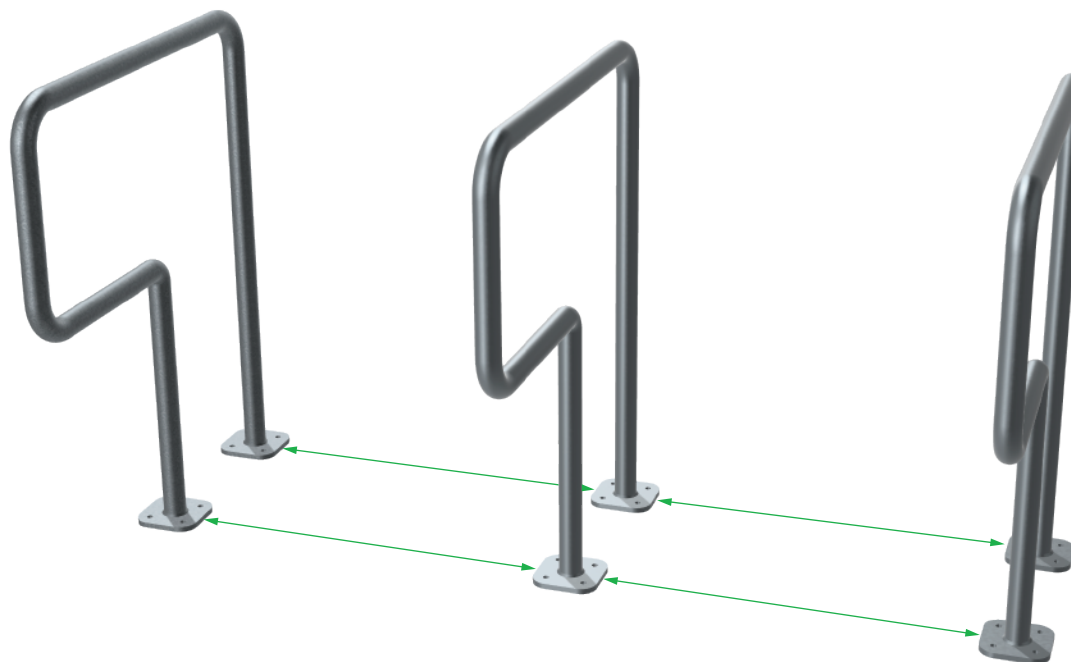
Vajalik kogus - 8 x M10 (ühe hoidja jaoks)



Kõik augud 11mm Ø



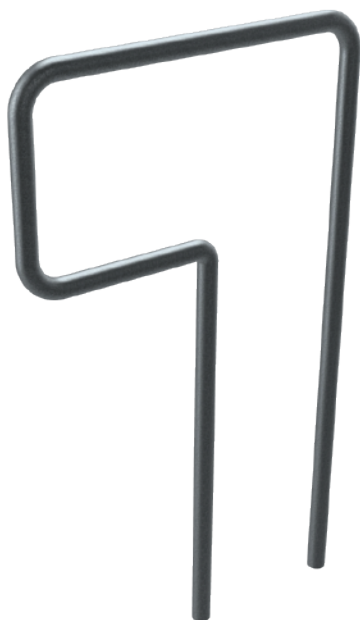
EDGE



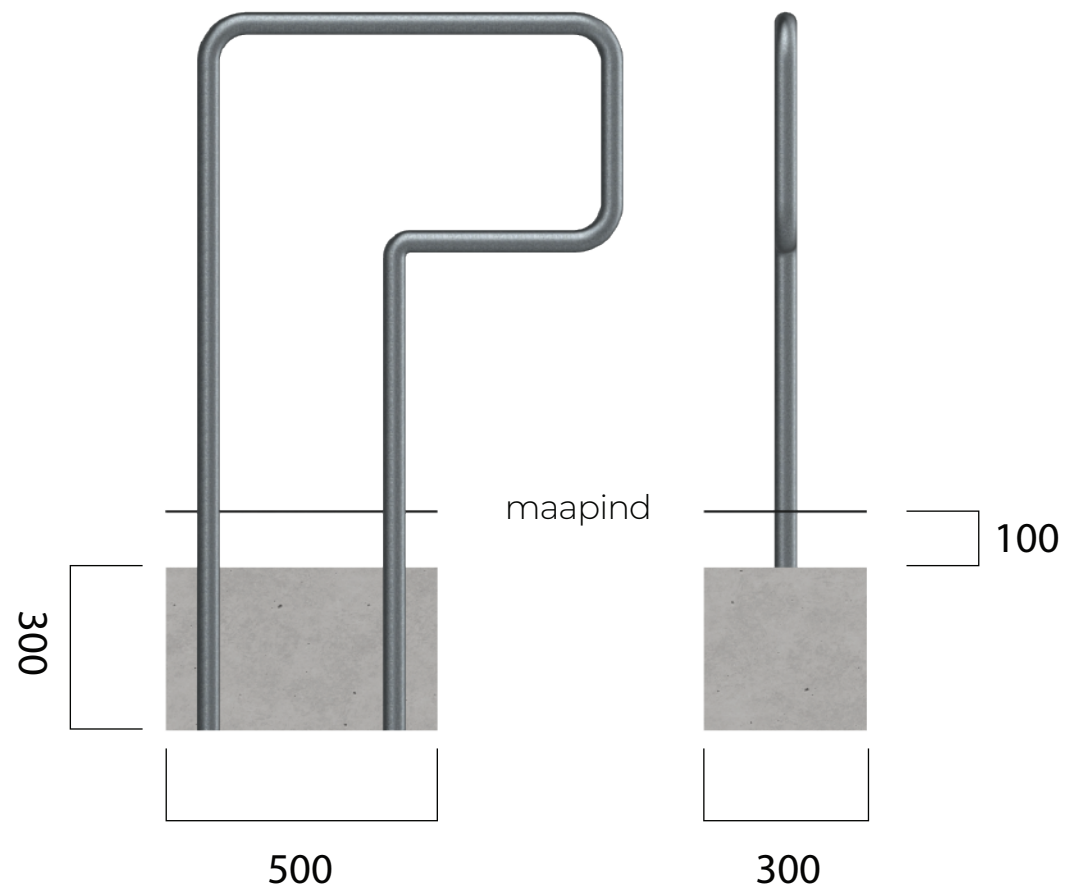
Jadasse pannes jälgida raamide ühtlast vahet



EDGE



Maasisene EDGE tuleb valada betooni



Betoneerimise näidis